



# LOGFAS 8.2.0 WHAT'S NEW



Copyright 2023 NCI Agency

*This page is left blank intentionally*

## CONDITIONS OF RELEASE

This NATO document is released subject to the following conditions:

1. All NATO manuals and tutorials are intended for the users and administrators. This material is not to be reproduced, in part or in whole, and by any means for commercial use without prior written permission of the NATO Communications and Information Agency (NCI Agency).
2. The recipient agrees to use its best endeavours to ensure that the information herein disclosed, whether or not it bears a security classification, is not dealt with in any manner (a) contrary to the intent of the provisions of the Charter of the NATO Communications and Information Agency, or (b) prejudicial to the rights of the owner thereof to obtain patent, copyright or other likely statutory protection, therefore.

Copyright © All Years - NCI Agency. All rights reserved.

*This page is left blank intentionally*

**DOCUMENT CONFIGURATION MANAGEMENT**

<b>Version</b>	<b>Amendments</b>	<b>Date</b>	<b>Author</b>
0.1	Initial draft	13 JUN 2023	Andras Amann
0.2	Review	14 JUN 2023	Rofel Marius
1.0	Released version	16 JUN 2023	Lukasz Pajak

*This page is left blank intentionally*

<b>TABLE OF CONTENTS</b>		Page
<b>1</b>	<b>Introduction</b>	<b>9</b>
1.1	Scope and organization of this document	9
<b>2</b>	<b>Built-in Help</b>	<b>11</b>
2.1	Scope	11
<b>3</b>	<b>New Features Introduced in LOGFAS 8.2.0</b>	<b>13</b>
3.1	ADAMS	13
3.2	UMM	14
<b>4</b>	<b>Bugs Fixed and Technical changes in LOGFAS 8.2.0</b>	<b>15</b>
4.1	ADAMS - Changing destination from MOVEMENTS PANEL	15
4.2	ADAMS - Forces view, CRD Marker Wrong Status Color For Sourced UMLs	15
4.3	ADAMS - Gantt Show UnitMovement Overlaps option Broken	15
4.4	ADAMS - Graph View Crash with Overflow Exception	15
4.5	ADAMS - Question to save on exit or DDP reload	15
4.6	ADAMS - Selected Multiple Gantt Bars are not Moved Forward in The Gantt	15
4.7	ADAMS - Stopover times are lost after changes	15
4.8	ADAMS - Sync Planning Status For Self Deployed UML	15
4.9	ADAMS/CORSOM - Mission Composer Change Priority by Drag-Drop is not working	15
4.10	ADAMS/CORSOM - Transferring Items to Partial Mission Path	16
4.11	ADAMS/CORSOM - UMLs Partially Sourced Planning Statuses When DDP First Opened	16
4.12	COMMON - Map Object Properties Panel	16
4.13	COMMON - Using Server Maps is forgotten after module restart	16
4.14	CORSOM - DOCUMENTATION - Update of LOGFAS GIS View	16
4.15	CORSOM - Max Assets Not Working in Mission Composer	16
4.16	CORSOM - Purged tracks still shown on the map	16
4.17	CORSOM - RSOM Location Filter Wrongly Excludes Unit Movements	16
4.18	CORSOM- Utilize Unallocated Capacity Issue in Mission Composer	17
4.19	CORSOM-ADAMS - Query Geolocations Issue	17
4.20	EVE - Importing a .eve or .xml file with different Reference Data from the Database	17
4.21	GEOMAN - Error exporting Networks Security Labelling	17
4.22	GEOMAN - Error when saving edge data on multiple selected edges	17
4.23	GEOMAN - Locate Map Data directories reporting no content	17
4.24	GEOMAN - Showing Forces issue	17
4.25	GEOMAN - Undo button is no longer active after a failed attempt to save changes without providing an ID in the Multi-Row Editors	17
4.26	GEOMAN/ADAMS/CORSOM - Changing Map Preferences When Modules Are Active	17
4.27	LDM - DDP Import files overwrite planned times with INCORRECT execution times	18
4.28	LDM - Error during the import of SPM Scenario containing SPM_PolicyElements	18
4.29	LDM - Export - SPM Scenario Exports all NPS and FPH from Capability Review	18
4.30	LDM - Export to TOPFAS 6.1 & 5.1 Type Fails	18
4.31	LDM - Failed Import of Renamed FP	18
4.32	LDM - Not able to import TFE Parameters File LOGFAS 7xx versions	18

TABLE OF CONTENTS

---

4.33	LDM - TOPFAS export with security labels mixes Automatic and Manual information marking	18
4.34	LDM/GEOMAN - Failed Route Tables with DDP Imports	18
4.35	SDM - Scenario Animation Fails if Asset Type has no value in the LIM Cargo Bay Field	18
4.36	SETUP - Broken Internal Hash for Nation 2 Update File Deployed with LOGFAS 800	19
4.37	SPM - Alternates records without commodity RIC	19
4.38	SPM - Error When Generating Scenario Report	19
4.39	SPM - Menu Options Not Accessible For Existing Sustainment Policy	19
4.40	TECH - SQL - LOGFAS 7 database cannot be upgraded to LOGFAS 8 when History was enabled	19
4.41	UMM - Content Not Adaptable to Resizable Window in UMM	19
4.42	UMM - Deleting History from large database takes too long	19



## **1 INTRODUCTION**

### **1.1 SCOPE AND ORGANIZATION OF THIS DOCUMENT**

#### **1.1.1 Audience**

This document is designed for Operators familiar with LOGFAS 8.1.0 who are upgrading to LOGFAS 8.2.0. It can also be used by anyone who wants to learn the features fixed, introduced or improved in 8.2.0 release.

#### **1.1.2 Scope**

This document describes the key changes introduced in LOGFAS 8.2.0 releases impacting the work of Operators. It is not meant to teach basic skills but to update existing knowledge to the newest version of LOGFAS.

The full list of changes introduced in LOGFAS 8.2.0 can be found in the applicable LOGFAS Release Notes.

#### **1.1.3 Organization**

Following Chapters are organized by LOGFAS module. In each module features changed in versions 8.2.0 are compared with corresponding features of version 8.1.0.

*This page is left blank intentionally*

## **2 BUILT-IN HELP**

### **2.1 SCOPE**

The built-in help structure, functionality and content are updated to completely reflect functionalities available in all LOGFAS 8.2.0 modules. Help Files are accessible through the Help main menu from each module.

*This page is left blank intentionally*

### 3 NEW FEATURES INTRODUCED IN LOGFAS 8.2.0

#### 3.1 ADAMS

##### 3.1.1 ADAMS - Delete Multiple DDPs At Once

##### 3.1.2 LOGFAS 8.2.0 Functionality

Multiple DDP per Plan can be deleted at the same time from the Open DDP window.

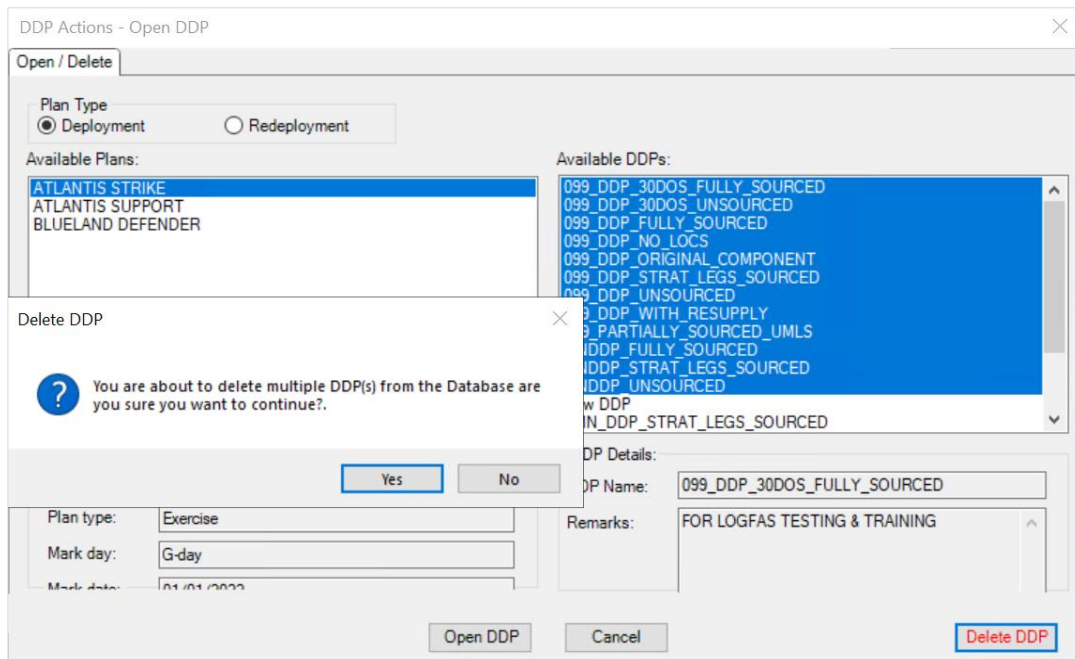


Figure 1 LOGFAS 8.2.0 Delete multiple DDPs.

##### 3.1.3 LOGFAS 8.1.0 Functionality

DDPs can be deleted one at a time only.

**3.2 UMM****3.2.1 UMM - Update Web User Details Only Possible by Update Password****3.2.1.1 LOGFAS 8.2.0 Functionality**

Any property (email, phone number etc..) of a Web User in UMM can be edited without having to change the password.

**3.2.1.2 LOGFAS 8.1.0 Functionality**

Password update is required to update Web User properties in UMM.

**3.2.2 TECH - UMM- Backup and restore users and permissions****3.2.2.1 LOGFAS 8.2.0 Functionality**

An option is available to export/import users and permission to/from CSV file format .

An important note is for recreating PostgreSQL Login roles for the imported users still the standard UMM "create missing login roles" will have to be used .

**3.2.2.2 LOGFAS 8.1.0 Functionality**

No option is available in UMM to export/import users and permission data.

## **4 BUGS FIXED AND TECHNICAL CHANGES IN LOGFAS 8.2.0**

### **4.1 ADAMS - CHANGING DESTINATION FROM MOVEMENTS PANEL**

The LOC color is updated in the Graph view according to the changes made in the Movements panel for movement destinations and MOTs.

### **4.2 ADAMS - FORCES VIEW, CRD MARKER WRONG STATUS COLOR FOR SOURCED UMLS**

The CRD marker reflects the correct situation with various combinations of sourced and unsourced movements. This was not the case in previous releases, when a road movement was sourced from HB to FD and another movement from the same force was still unsourced.

### **4.3 ADAMS - GANTT SHOW UNITMOVEMENT OVERLAPS OPTION BROKEN**

The Gantt detects and shows the overlaps in a consistent manner.

### **4.4 ADAMS - GRAPH VIEW CRASH WITH OVERFLOW EXCEPTION**

Graph view does not produce an overflow exception anymore, which used to happen because of technical reasons.

### **4.5 ADAMS - QUESTION TO SAVE ON EXIT OR DDP RELOAD**

When a DDP is reloaded, the Unsaved Changes prompt does not appear anymore for the following actions, which are automatically saved to the database:

1. Changing the destination of a Unit Movement
2. Deleting an Unit Movement
3. Sourcing Unit Movements using the Mission Composer or by "drag & dropping" causing changes to preceding and succeeding Unit Movements

The same behaviour occurs also after undoing changes made in the Mission Scheduler and after using the Manifest Viewer, which caused unused manifest items to remain in memory.

### **4.6 ADAMS - SELECTED MULTIPLE GANTT BARS ARE NOT MOVED FORWARD IN THE GANTT**

All selected Component Gantt bars can now be moved according to the multi-selection.

### **4.7 ADAMS - STOPOVER TIMES ARE LOST AFTER CHANGES**

When editing/adding/updating/deleting a location for a mission leg, the mission timings are recalculated only after the updated leg, all the previous ones will maintain the same time values.

### **4.8 ADAMS - SYNC PLANNING STATUS FOR SELF DEPLOYED UML**

The correct "Sourced" planning status is set by ADAMS for a "Self-Deployed" UML when attempting to manually change the planning status to "Unsourced", if the execution status of the UML is "Booked".

### **4.9 ADAMS/CORSOM - MISSION COMPOSER CHANGE PRIORITY BY DRAG-DROP IS NOT WORKING**

Priority is updated accordingly when drag and dropping Asset Types in the Mission Composer and in Detailed Transportation Analysis.

**4.10 ADAMS/CORSOM - TRANSFERRING ITEMS TO PARTIAL MISSION PATH**

The Mission Leg selection dialog has been removed from the sequence. ADAMS and CORSOM automatically identify and select the correct Mission Leg(s) on the target Mission and have it highlighted in the manifest after the transferring item(s).

This also means that ADAMS and CORSOM can deal with missions with looping itinerary (multiple sorties from the same origin and destination). If one sortie is full, the next sortie will be targeted with a load attempt, according to the target Asset Type capacity per each sortie, until all dragged items can be loaded. If the case, a dialog prompts whether the last sortie can be overloaded or not.

**4.11 ADAMS/CORSOM - UMLS PARTIALLY SOURCED PLANNING STATUSES WHEN DDP FIRST OPENED**

When a DDP is first opened, no "Partially Sourced" Planning statuses are shown anymore for UMLs with all of their inventory items completely loaded.

**4.12 COMMON - MAP OBJECT PROPERTIES PANEL**

When not pinned, the Map Object Properties panel stays open for selected Geolocs or network edges (until the user clicks somewhere else) regardless of the "Map Objects" panel being pinned or not.

**4.13 COMMON - USING SERVER MAPS IS FORGOTTEN AFTER MODULE RESTART**

The user's most recent map selection will now be remembered, whether as Local Maps or WMS. Upon opening the applicable modules (GEOMAN, ADAMS and CORSOM), the last option selected will be active.

**4.14 CORSOM - DOCUMENTATION - UPDATE OF LOGFAS GIS VIEW**

CORSOM Help File is updated with a diagram and the explanation of Lifecycle of Tracks in LOGFAS.

**4.15 CORSOM - MAX ASSETS NOT WORKING IN MISSION COMPOSER**

CORSOM behavior is aligned with ADAMS when using Max. Assets values with return legs in the Mission Composer.

**4.16 CORSOM - PURGED TRACKS STILL SHOWN ON THE MAP**

When reloading the DDP, CORSOM now removes tracks from the Map display if they no longer exist in the database.

**4.17 CORSOM - RSOM LOCATION FILTER WRONGLY EXCLUDES UNIT MOVEMENTS**

RSOM Filter logic for Movements and Missions is updated for a better result when selecting RSOM Locations in a DDP. The basic principle is that once a Mission/Movement Leg Departs from an RSOM location, all following Legs are considered RSOM also. This better serves the purpose when the user fails to select all RSOM locations.



**4.18 CORSOM- UTILIZE UNALLOCATED CAPACITY ISSUE IN MISSION COMPOSER**

Utilize unallocated capacity option now considers existing missions with spare capacity that are loaded also with the inventory of the UML(s) being sourced.

**4.19 CORSOM-ADAMS - QUERY GEOLOCATIONS ISSUE**

The behaviour is updated as when “Remove all GeoLocs from map” is used-, the GeoLocs being used in the DDP will be not visible on the map, but will continue to appear in the Map Objects tree view (where they are unchecked). The GeoLocs not used in the DDP will be removed from both the map and Map Objects tree view.

**4.20 EVE - IMPORTING A .EVE OR .XML FILE WITH DIFFERENT REFERENCE DATA FROM THE DATABASE**

When importing EVE files with reference data versions different that the target database, the import is still allowed (it used to appear as aborted), but the user is now prompted to continue. However, it is strongly recommended to import such files only if sure that data will not be corrupted.

**4.21 GEOMAN - ERROR EXPORTING NETWORKS SECURITY LABELLING**

Exporting a network with the Classification including characters like <> -does not return errors anymore.

**4.22 GEOMAN - ERROR WHEN SAVING EDGE DATA ON MULTIPLE SELECTED EDGES**

No error appears anymore when saving edge data for multiple edges selection.

**4.23 GEOMAN - LOCATE MAP DATA DIRECTORIES REPORTING NO CONTENT**

No more misleading message appears anymore, that no content is available when it is present in the folder of DATA\Projects.

**4.24 GEOMAN - SHOWING FORCES ISSUE**

Only selected Force(s) can be shown on the map according to their individual checkboxes activation in the Map Objects panel, under the “Forces By Profile” layer.

**4.25 GEOMAN - UNDO BUTTON IS NO LONGER ACTIVE AFTER A FAILED ATTEMPT TO SAVE CHANGES WITHOUT PROVIDING AN ID IN THE MULTI-ROW EDITORS**

The Undo button is now active and there is no need to provide an ID after a failed attempt to save changes in the Multi-Row Editors (e.g. runways, storage areas, throughputs etc.).

**4.26 GEOMAN/ADAMS/CORSOM - CHANGING MAP PREFERENCES WHEN MODULES ARE ACTIVE**

Certain Map preferences (Default Nation and Default Scenario and 2-letter code) updates are now shared between GEOMAN/CORSOM/ADAMS, without the need to restart the modules.

**4.27 LDM - DDP IMPORT FILES OVERWRITE PLANNED TIMES WITH INCORRECT EXECUTION TIMES**

When importing DDP files, the DDP missions planned times are no longer overwritten by EVE execution (estimated) times. Additionally, the content of the DDP files exported using LDM release 8.2.0 is updated, to avoid this issue also when importing to previous LOGFAS releases.

**4.28 LDM - ERROR DURING THE IMPORT OF SPM SCENARIO CONTAINING SPM\_POLICYELEMENTS**

No more error appears when importing a SPM scenario file with associated Geolocs not present in the target database.

**4.29 LDM - EXPORT - SPM SCENARIO EXPORTS ALL NPS AND FPH FROM CAPABILITY REVIEW**

Only the applicable National Parameter Set (NPS) gets exported, according to the SPM scenario selection, instead of exporting all NPS-es.

**4.30 LDM - EXPORT TO TOPFAS 6.1 & 5.1 TYPE FAILS**

An user-friendly error message is displayed when location types are not compatible with the selected TOPFAS type format.

**4.31 LDM - FAILED IMPORT OF RENAMED FP**

No table failure occurs when importing a FP&H file with a Profile ID that was changed after having been exported from the same database it is being imported back to.

**4.32 LDM - NOT ABLE TO IMPORT TFE PARAMETERS FILE LOGFAS 7XX VERSIONS**

FHXXTFE\_Parameters.xml file is updated [in KB](#) 2023-01 "Not able to import FHXXTFE\_PARAM.XML file" published on LOGNET.

**4.33 LDM - TOPFAS EXPORT WITH SECURITY LABELS MIXES AUTOMATIC AND MANUAL INFORMATION MARKING**

Now when we select "automatically generate information making" radio button when exporting to .xml TOPFAS format all the security label, classifications options will be cleared.

**4.34 LDM/GEOMAN - FAILED ROUTE TABLES WITH DDP IMPORTS**

No table failures occur when importing DDP files with missions using routes that have been copied (with network copies) or re-created (after being deleted) with the same names in the target database.

**4.35 SDM - SCENARIO ANIMATION FAILS IF ASSET TYPE HAS NO VALUE IN THE LIM CARGO BAY FIELD**

No error appears anymore when running a SDM Scenario with Asset Types without values for LIM capacity in the Cargo Bay Capacity tab.

**4.36 SETUP - BROKEN INTERNAL HASH FOR NATION 2 UPDATE FILE DEPLOYED WITH LOGFAS 800**

No warning appears anymore for a broken hash, when applying the Nation 2 reference update file deployed with this release.

**4.37 SPM - ALTERNATES RECORDS WITHOUT COMMODITY RIC**

The OK button is now enabled only after providing a RIC value for the Alternate commodity record.

**4.38 SPM - ERROR WHEN GENERATING SCENARIO REPORT**

No more errors appear when generating Scenario Report.

**4.39 SPM - MENU OPTIONS NOT ACCESSIBLE FOR EXISTING SUSTAINMENT POLICY**

Edit, Duplicate and Delete buttons are now enabled when right-clicking any record listed in Manage Sustainment Policies -window.

**4.40 TECH - SQL - LOGFAS 7 DATABASE CANNOT BE UPGRADED TO LOGFAS 8 WHEN HISTORY WAS ENABLED**

KB 2023-05 "[LOGFAS Database Maintenance](#)" is available on LOGNET to apply if database SQL upgrade fails due to this issue.

**4.41 UMM - CONTENT NOT ADAPTABLE TO RESIZABLE WINDOW IN UMM**

In UMM, the content of "Role Manger window", "Member users" tab is automatically adapted to the size of the window.

**4.42 UMM - DELETING HISTORY FROM LARGE DATABASE TAKES TOO LONG**

KB 2023-05 "[LOGFAS Database Maintenance](#)" is available on LOGNET to apply.

developed by

